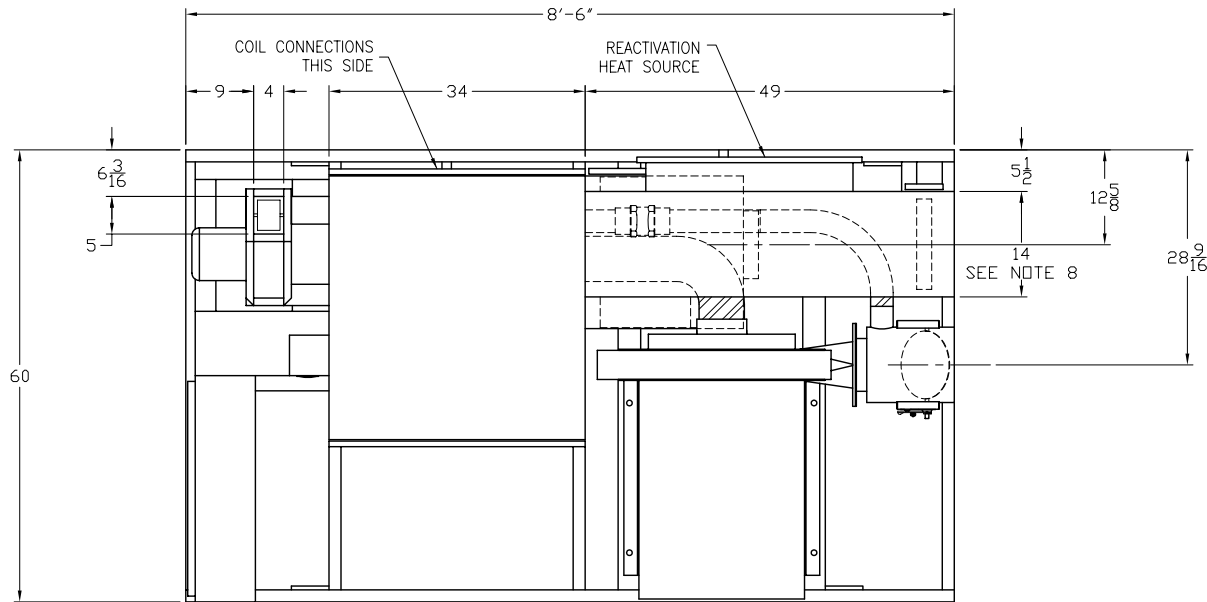




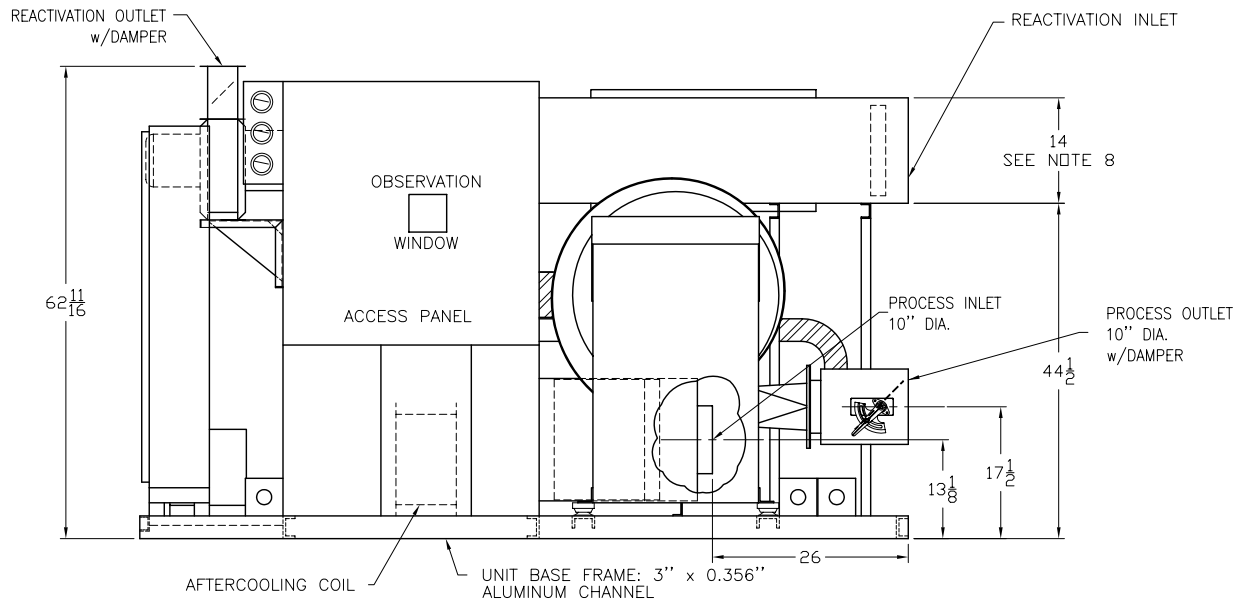
BRY-AIR SYSTEMS
 DIV. of BRY-AIR, INC.
 ROUTE 37 WEST
 SUNBURY, OHIO 43074
 TEL (740) 965-2974
 FAX (740) 965-5470
 E-MAIL: systems@bry-air.com

FDL-1800 RESIN DRYER



SPECIFICATIONS	FDL-1800
Process CFM	1059
Reactivation CFM	407
Purge CFM	89
Process Ext. Static (inches w.c.)	12.0
Reactivation Ext. Static (inches w.c.)	0.75
Process motor H.P.	5
Reactivation motor H.P.	1
Bed motor H.P.	1/8
Reactivation Heat Req'd - MBH	131.9
Control Load - KVA @ 120 V	1.00
Approximate weight - lbs.	1800

CONTROL PANEL
ENCLOSURE



NOTES:

1. Supply voltage must be specified.
2. Electrical components are mounted in a drip proof enclosure.
3. Unless otherwise noted, provide 25" clearance around the entire unit and 40" in front of the control panel enclosure.
4. All dimensions are in inches and are subject to change without notice.
5. Specifications subject to change without notice.
6. Two (2) pieces of 10" Dia. x 12' long Red Silicone Hose, and all hardware are provided to connect Process Outlet to Hopper.
7. Two (2) pieces of 10" Dia. x 12' long Black Neoprene Hose, and all hardware are provided to connect Process Inlet to Hopper.
8. The dimensions shown are for standard indoor construction, with electric reactivation heat. For direct fired gas react heat, the react inlet duct height is 18 1/4" and width is 12 1/4".

This is not a certified drawing.
 Contact factory for certified dimensional drawings.

BAS-2104
 11/21/03