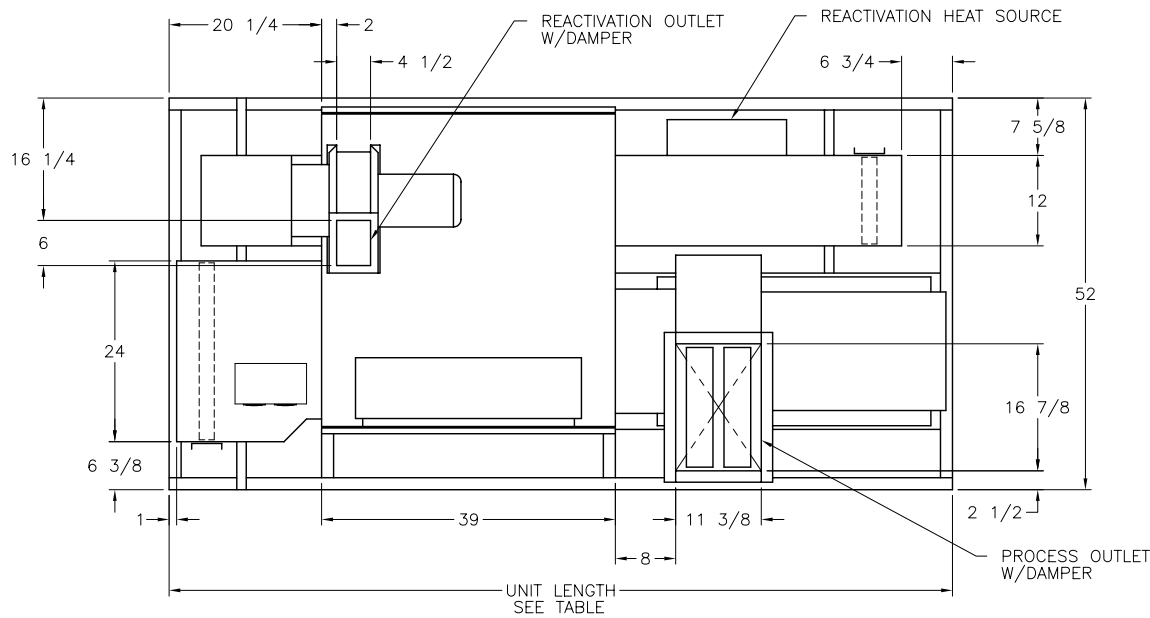




BRY-AIR, INC.  
 ROUTE 37 WEST  
 SUNBURY, OHIO 43074  
 TEL (740) 965-2974  
 FAX (740) 965-5470  
 E-MAIL: bryair1@bry-air.com

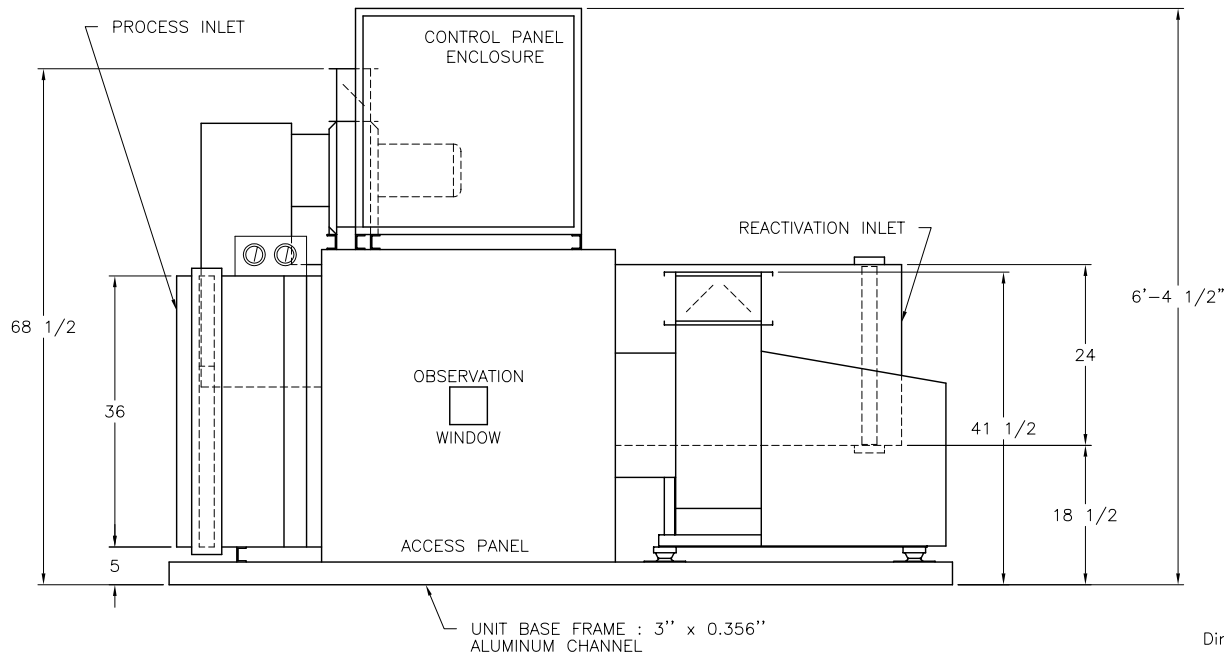
## VFB-24 DEHUMIDIFIER



| SPECIFICATIONS                         | VFB-24 |
|--|--------|
| Process SCFM                           | 2400   |
| Reactivation SCFM                      | 800    |
| Process Ext. Static (inches w.c.)      | 1.5    |
| Reactivation Ext. Static (inches w.c.) | 0.75   |
| Process motor H.P.                     | 3      |
| Reactivation motor H.P.                | 3      |
| Bed motor H.P.                         | 1/40   |
| Reactivation Heat Req'd - MBH          | 172.8  |
| Control Load - KVA @ 120 V             | 0.75   |
| Approximate weight - lbs.              | 1025   |

### UNIT LENGTH TABLE

| React. Heat Source | Construction                       |                          |                                |                           |
|--------------------|------------------------------------|--------------------------|--------------------------------|---------------------------|
|                    | Std. Indoor 30% Eff. Inlet Filters | Indoor High Eff. Filters | Outdoor 30% Eff. Inlet Filters | Outdoor High Eff. Filters |
| Electric           | 8'-8"                              | 9'-3"                    | 8'-8"                          | 9'-7"                     |
| Gas                | 9'-7"                              | 10'-7"                   | 9'-11"                         | 10'-11"                   |
| Steam              | 9'-7"                              | 10'-7"                   | 9'-11"                         | 10'-11"                   |



#### NOTES:

1. For outdoor construction the reactivation fan is rotated to a horizontal discharge and a rain hood is added.
2. Supply voltage must be specified.
3. Electrical components are mounted in a drip proof enclosure.
4. Unless otherwise noted, provide 25" clearance around entire unit and 40" in front of the control panel enclosure.
5. All dimensions are in inches and are subject to change without notice.
6. Specifications subject to change without notice.

This is not a certified drawing.  
 Dimensions shown are for standard electric indoor construction.  
 Contact factory for certified dimensional drawings.

BA-787-2  
 11/21/03