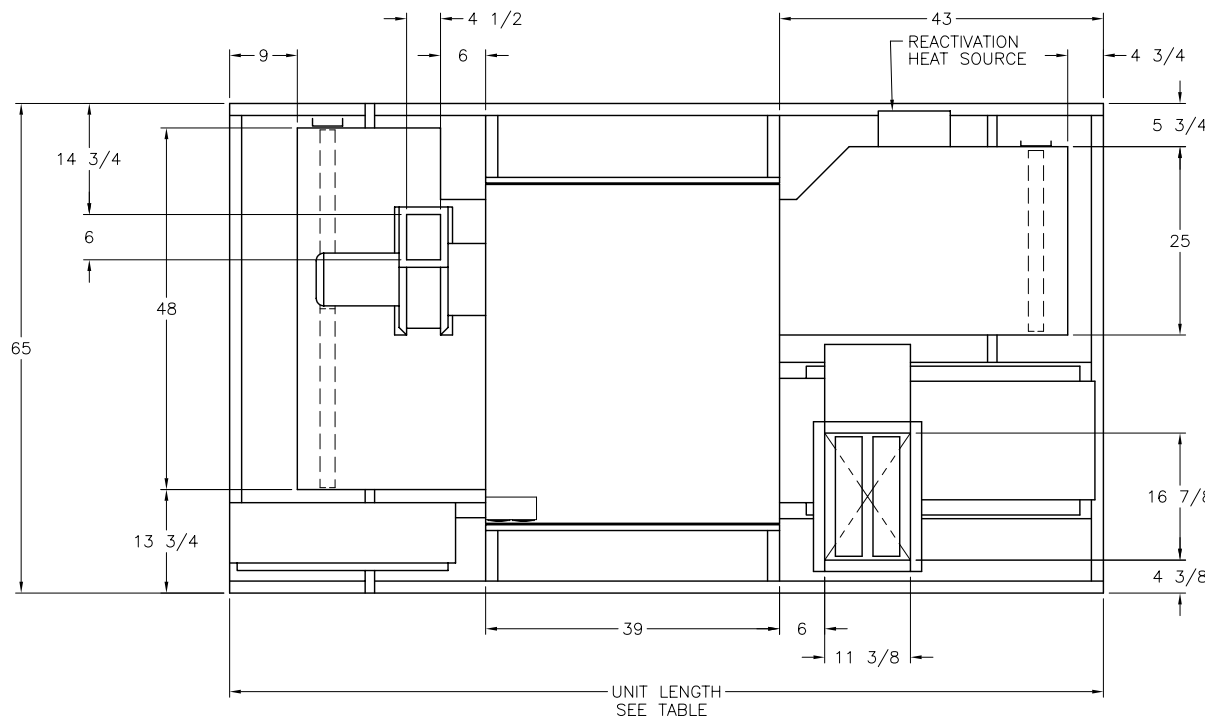




BRY-AIR, INC.
 ROUTE 37 WEST
 SUNBURY, OHIO 43074
 TEL (740) 965-2974
 FAX (740) 965-5470
 E-MAIL: bryair1@bry-air.com

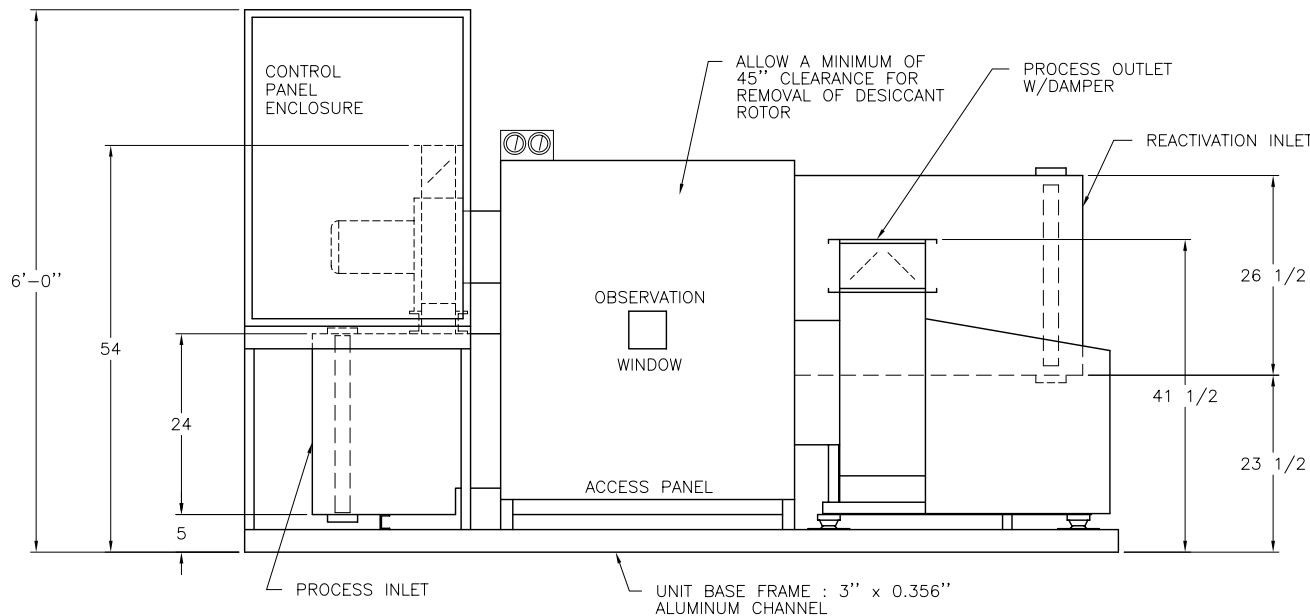
TM VFB-36 DEHUMIDIFIER

SPECIFICATIONS	VFB-36
Process SCFM	3600
Reactivation SCFM	1200
Process Ext. Static (inches w.c.)	1.5
Reactivation Ext. Static (inches w.c.)	0.75
Process motor H.P.	5
Reactivation motor H.P.	3
Bed motor H.P.	1/40
Reactivation Heat Req'd - MBH	259.2
Control Load - KVA @ 120 V	0.75
Approximate weight - lbs.	1275



UNIT LENGTH TABLE

React. Heat Source	Construction			
	Std. Indoor 30% Eff. Inlet Filters	Indoor High Eff. Filters	Outdoor 30% Eff. Inlet Filters	Outdoor High Eff. Filters
Electric	9'-8"	10'-4"	9'-8"	10'-8"
Gas	11'-4"	12'-4"	11'-8"	12'-8"
Steam	10'-8"	12'-0"	11'-0"	12'-4"



NOTES:

- For outdoor construction the reactivation fan is rotated to a horizontal discharge and a rain hood is added.
- Supply voltage must be specified.
- Electrical components are mounted in a drip proof enclosure.
- Unless otherwise noted, provide 25" clearance around the entire unit and 40" in front of the control panel enclosure.
- All dimensions are in inches and are subject to change without notice.
- Specifications subject to change without notice.

This is not a certified drawing.
 Dimensions shown are for standard electric indoor construction.
 Contact factory for certified dimensional drawings.

BA-788-2
 11/21/03